

# AI BIBLE STUDY:

## A Contemporary Guide to Understanding Scripture

**Brian Pitts, M.D.**

# **AI BIBLE STUDY: A CONTEMPORARY GUIDE TO UNDERSTANDING SCRIPTURE**

## Copyright

© Brian Pitts, M.D., Loving The Truth, LLC. All rights reserved.

This book, *AI and Bible Study: A Modern Guide to Deeper Scripture Understanding*, includes all text, images, and content and is protected by copyright law. No part of this publication may be reproduced, distributed, or transmitted in any form or by any means, including photocopying, recording, or other electronic or mechanical methods, without prior written permission from the author, except in the case of brief quotations used for review purposes or in academic works.

Published by *Loving The Truth, LLC*

For permission requests or inquiries, please contact:

Brian Pitts, M.D.

[brian@lovingthetruth.com](mailto:brian@lovingthetruth.com)

[www.lovingthetruth.com](http://www.lovingthetruth.com)

## Disclaimer

This book is for informational and educational purposes only. While every effort has been made to ensure the accuracy and reliability of the information provided, the author and publisher assume no responsibility for errors or omissions or the use of this material.

## Dedication

To my wife, Galina,

Your unwavering love, support, and encouragement have been my greatest earthly blessing. You have stood by me through every challenge and celebrated every victory, reminding me of the strength found in faith and love. Your grace, kindness, and wisdom inspire me daily, and I am eternally grateful for the gift of sharing this life with you.

Above all, I dedicate this work to Jesus Christ, my Savior and the source of all success in my life. Only through His guidance, provision, and unending grace have I achieved anything, including my journey as a physician. To Him be all the glory, forever and ever.

With all my love,

A handwritten signature in black ink, appearing to read "Brian". The letters are fluid and connected, with a large, stylized "B" at the beginning.

# Table of Contents

|  |     |
|--|-----|
| Prologue   | 7   |
| Introduction: Why AI And Bible Study               | 8   |
| Chapter 1: A Brief History of AI                   | 17  |
| Chapter 2: Large Language Models                   | 26  |
| Chapter 3: How AI Can Enrich Your Bible Study      | 35  |
| Chapter 4: Practical Ways To Use AI In Devotionals | 51  |
| Chapter 5: Navigating AI Ethically As A Christian  | 71  |
| Chapter 6: Using AI For Christian Bible Study      | 84  |
| Chapter 7: Getting Started With AI Tools           | 103 |
| Chapter 8: Real-Life Scenarios: AI Meets The World | 127 |
| Chapter 9: Tips for Asking Great AI Prompts        | 141 |
| Conclusion: A Faithful Partner with AI             | 150 |
| Bonus Prompts                                      | 158 |
| Endnotes   | 162 |
| Glossary   | 164 |
| Bibliography                                       | 168 |
| Image Credits                                      | 173 |
| Discussion Questions                               | 174 |
| Further Reading                                    | 179 |
| Going Deeper                                       | 181 |
| About the Author                                   | 183 |
| INDEX  | 184 |

*“ The Holy Spirit can teach you more in one moment than all the wisdom and technology of the world could teach you in a lifetime.*

*— Brian Pitts*



# PROLOGUE

Have you ever wished you had a wise friend to tell you how a Bible verse originated in history, what the Greek or Hebrew original meant, or identify interesting relationships between passages? That is precisely why I wrote this book.

As technology advances, the potential to enrich our Bible study using artificial intelligence (AI) grows. However, many Christians understandably grapple with integrating modern technology with sacred Scripture. Is it appropriate? Is it beneficial? Will it enhance or detract from our spiritual journey?

In this book, we will explore how AI can enhance Bible study while respecting the sanctity of Scripture and the authority of the Holy Spirit. Think of AI as a study companion, not a replacement for traditional methods but a tool that enriches them with knowledge and insights.

Whether you're a tech guru or a technophobe, this book is designed to guide you in navigating the intersection of ancient wisdom and new technology. It provides an insightful perspective on how AI can enhance, not replace, our traditional Bible study methods.





## CHAPTER 3

# HOW AI CAN ENRICH YOUR BIBLE STUDY

AI can help you explore practical ways to uncover historical context, understand original languages, find cross-references, and apply biblical wisdom to modern life.



**I**magine sitting down to study the Bible with a companion so knowledgeable and insightful that it feels as though you're working alongside a theologian who understands every nuance of ancient languages, cultural contexts, and biblical connections. This companion isn't a replacement for your reflection or the role of the Holy Spirit but rather an enhancer—someone who brings tools to illuminate Scripture and make it more accessible. This is what artificial intelligence (AI) can do for Bible study. AI is a powerful ally that processes vast amounts of data, offers historical insights, analyzes language, and highlights connections, helping you explore the Word of God with clarity and depth.

The Bible is not just a book to read; it's a living text meant to be understood, wrestled with, and applied to our lives. While traditional tools like concordances and commentaries remain important, AI introduces a new layer of depth. It doesn't just provide answers but invites deeper exploration. AI acts as your assistant, offering guidance as you uncover the treasures of Scripture. Let's explore how AI can enhance your Bible study, making it a richer and more meaningful experience.

## A Historical Time Machine for Scripture

The Bible was written over centuries across vastly different cultural and historical contexts. One of the most significant challenges for modern readers is bridging the gap between our contemporary worldview and the ancient world of the Bible. This is where AI shines. It acts as a time machine,

transporting you into biblical times' cultural and historical landscapes.

For instance, consider the parable of the woman who lost her coin in Luke 15. At first glance, the story might seem minor or trivial. Why would someone turn their house upside down for a single coin? AI can provide the cultural backdrop to explain that this coin wasn't just loose change; it was likely part of the woman's dowry, a significant symbol of her marriage covenant and financial security. It would have been akin to losing a wedding ring or a critical bank account today. With this understanding, the woman's frantic search becomes relatable and poignant, highlighting the parable's more profound message about God's relentless pursuit of the lost.

Historical insights extend beyond individual stories to more prominent biblical themes. When studying the Exodus, AI can delve into the significance of Pharaoh's resistance to letting the Israelites go. It can explain how ancient Egyptian theology viewed Pharaoh as a divine figure, making his confrontation with Moses directly challenging his perceived divinity. AI can also explore the broader implications of the Exodus narrative as a liberation story, comparing it to similar accounts from other ancient cultures. This level of context not only enriches your understanding of the story but highlights its uniqueness and theological depth.

Another example is the Sermon on the Mount. AI can reveal how Jesus' teachings challenged His time's social and religious norms. By exploring first-century Jewish customs, Roman political structures, and prevailing philosophical

ideas, AI helps you grasp the radical nature of Jesus' message. It's no longer just a moral lesson; it's a call to countercultural living with profound implications for every aspect of life.

Historical context also helps clarify challenging passages. Take the Book of Revelation, for example. Many readers struggle to interpret its vivid imagery and apocalyptic language. AI can provide insights into the historical conditions of early Christians under Roman rule, showing how the book's symbols and visions would have offered hope and encouragement to believers facing persecution. Understanding its original audience can better apply its message to your own life.

In these ways, AI serves as a bridge to the past, helping you step into the world of the Bible. It doesn't just make Scripture more understandable; it makes it come alive, inviting you to see its relevance and beauty in new ways.

## Bridging the Language Gap

The Bible's original languages—Hebrew, Aramaic, and Greek—are rich with layers of meaning that often get lost in translation. While English versions of the Bible do their best to convey the text's meaning, specific nuances are inevitably missed. AI offers a solution as a linguistic bridge that helps you delve deeper into the words and phrases that shape Scripture.

Consider the word "love" in 1 Corinthians 13. In English, "love" is a broad term that can mean anything from

affection for a friend to romantic attachment. But in Greek, there are multiple words for love, each with its shade of meaning. AI can reveal that the word used in this passage is *agape*, a term for selfless, unconditional love. Unlike *eros* (romantic love) or *phileo* (brotherly love), *agape* reflects God's divine love for humanity. Understanding this distinction transforms the passage from a poetic description into a profound call to embody God's sacrificial love in our relationships.

Another example is the Hebrew word *hesed*, often translated as "loving-kindness" or "mercy." AI can unpack the full depth of this word, showing that it encompasses covenantal loyalty, steadfast love, and enduring commitment. It's not just about kindness; it's about a love that remains unshakable even in the face of failure. This understanding brings new depth to passages like Psalm 136, where the refrain "His love endures forever" takes on even greater significance.

AI also excels at illuminating idiomatic expressions and cultural references that might otherwise be puzzling. For example, in Matthew 6:22, Jesus says, "The eye is the body's lamp." This phrase might seem obscure to modern readers. Still, AI can explain that a "good eye" symbolized generosity in Jewish thought. In contrast, a "bad eye" represented greed or envy. This insight clarifies the verse's meaning and connection to the passages about money and trust in God.

Language insights also enhance one's understanding of key theological concepts. For example, John 1:1 uses *logos*: "In the beginning was the Word." AI can show how *logos* held



challenging, especially for those new to Bible study. AI excels at tracing themes and motifs across Scripture, helping you see the grand design that ties it all together.

For instance, when studying Moses' encounter with God at the burning bush, AI can highlight how the theme of the holy ground appears throughout the Bible. It might point to Joshua's encounter with the angel of the Lord at Jericho, where he is told to remove his sandals because he is standing on holy ground. AI can also trace the symbolism of fire as a representation of God's presence, from the pillar of fire in Exodus to the tongues of fire at Pentecost. These connections reveal the continuity of God's character and desire to dwell among His people.

AI is also invaluable for exploring intertextual references—instances where one part of Scripture echoes or builds upon another. For example, it can show how New Testament authors like Matthew and Paul draw on Old Testament prophecies to articulate the significance of Jesus' life, death, and resurrection. When you read about Jesus as the "Lamb of God," AI can connect this imagery to the Passover lamb in Exodus, the suffering servant in Isaiah, and the apocalyptic vision of the Lamb in Revelation. These connections enhance your intellectual understanding; they deepen your appreciation of God's redemptive plan.

Thematic exploration is another area where AI shines. Take the theme of covenant, which runs throughout the Bible. AI can trace its development from God's promises to Abraham through the Mosaic covenant at Sinai to the new covenant established by Jesus. By seeing how these covenants build

on one another, you gain a fuller understanding of God's faithfulness and the unity of Scripture.

AI also helps you identify patterns and literary structures that might go unnoticed. For example, many Psalms follow a chiastic structure, where parallel elements frame the central idea. AI can point out these patterns, helping you see the artistry and intentionality behind the text. This doesn't just make the Bible more interesting; it deepens your appreciation for its divine authorship.

By connecting the threads of Scripture, AI helps you see the Bible as a unified story rather than a collection of disconnected books. It invites you to marvel at God's Word's intricacy and beauty and see how its truths apply to your life today.

## Enhancing Your Study with the HEAR Method

To make the most of AI in your Bible study, consider using the HEAR method: Highlight, Explain, Apply, and Respond. This structured approach provides a framework for engaging with Scripture while leaving room for personal reflection and spiritual growth.

### H - Highlighting Key Insights

Highlighting is more than identifying interesting words or phrases; it's about uncovering why they matter. AI can help by providing contextual insights that bring the text to life. For example, when studying John 1:1—"In the beginning was the Word"—AI can explain that "Word" translates to *logos*, a

term loaded with meaning in Greek philosophy and Jewish theology. This insight transforms the verse from a simple statement into a profound declaration of Jesus' divinity and His role in creation.

### **E - Explaining the Text**

Understanding Scripture often requires unpacking its cultural and historical context. AI excels at offering explanations that clarify the text's original meaning. For example, when reading the parable of the Good Samaritan, AI can explain why Jesus' choice of a Samaritan as the hero was so shocking. This cultural insight makes the parable's message about love and neighborliness even more powerful.

### **A - Applying Biblical Truths**

The goal of Bible study is transformation—allowing God's Word to shape your thoughts, actions, and character. AI makes the application practical and actionable, suggesting steps like writing an encouraging note, practicing active listening, or showing generosity in specific situations.

### **R - Responding in Faith**

Responding to Scripture involves prayer, reflection, and action. AI can support this step by helping you create a plan for spiritual growth, offering reminders to revisit key passages, or suggesting ways to track your progress.



# Practical Integration of AI into Bible Study

Artificial intelligence (AI) is a remarkable tool, but it is essential to remember that it is just that—a tool. It is not a substitute for the personal engagement, prayer, and spiritual disciplines that form the heart of Bible study. AI enhances them rather than replacing traditional methods, like adding a new instrument to an orchestra. It introduces layers of depth and richness that complement, rather than overshadow, the foundational practices of studying God's Word.

## Complementing Prayer and Meditation

At its core, Bible study is a spiritual exercise, one that invites you to connect with God, reflect on His Word, and discern its application in your life. Prayer and meditation are integral to this process, allowing the Holy Spirit to guide your understanding and illuminate truths beyond intellectual comprehension. AI does not diminish the need for this divine interaction; instead, it supports it by providing clarity and context that enhance your reflection.

For example, as you meditate on Jesus' teachings about worry in Matthew 6, AI can provide insights into the cultural significance of lilies and birds in first-century Palestine. This historical perspective can enrich your prayer, giving you a clearer picture of the trust Jesus invites you to cultivate. While AI provides the context, a prayer allows these truths to settle in your heart, transforming your trust in God's provision.

## **Enriching Group Discussions**

For individual study, AI can transform the way you approach Scripture. Whether reading through a particular book, preparing for a sermon, or focusing on a thematic analysis, AI provides tools to make your study more efficient and insightful. For instance, if you're studying the theme of forgiveness, AI can quickly identify passages across the Bible that address this topic, highlight connections between Old and New Testament teachings, and offer historical insights into cultural practices related to forgiveness.

AI can also help you dig deeper into difficult passages. Consider Romans 9, a chapter that has challenged theologians for centuries with its discussions of predestination and God's sovereignty. AI can summarize various interpretive perspectives, point to relevant commentaries, and offer linguistic analyses that shed light on Paul's arguments. This doesn't replace the need for your prayerful wrestling with the text but gives you the tools to engage with it more thoughtfully.

## **Balancing Automation with Personal Engagement**

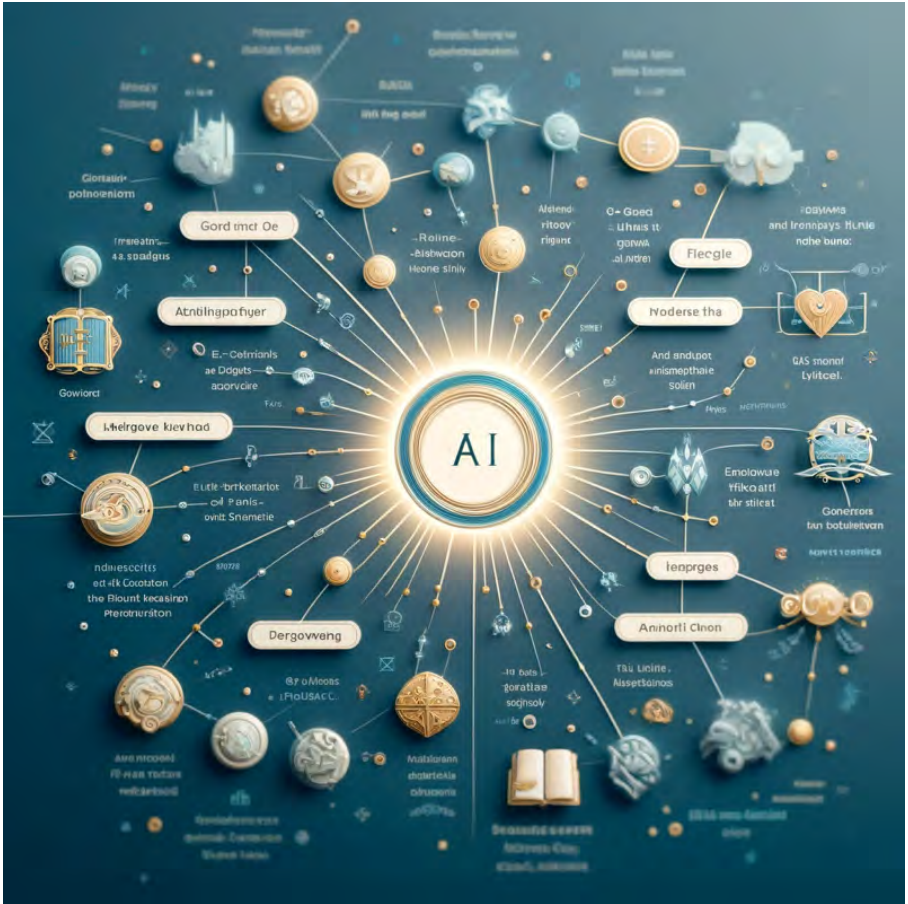
One risk of integrating AI into Bible study is the temptation to rely too heavily on automation. While AI can save time and provide quick answers, balancing this efficiency with personal engagement is essential. Spiritual growth happens when people wrestle with Scripture, ask questions, and seek God's guidance. AI can assist in this journey but cannot replace the transformative work when people engage deeply with God's Word.

For example, generating a passage summary using AI is helpful. Still, there's no substitute for reading the text, reflecting on its meaning, and allowing the Holy Spirit to speak to your heart. Similarly, while AI can suggest practical applications of a verse, your reflection determines how those applications align with your unique circumstances and calling.

## **Enhancing Personal Study Routines**

For individual study, AI can transform the way you approach Scripture. Whether reading through a particular book, preparing for a sermon, or focusing on a thematic analysis, AI provides tools to make your study more efficient and insightful. For instance, if you're studying the theme of forgiveness, AI can quickly identify passages across the Bible that address this topic, highlight connections between Old and New Testament teachings, and offer historical insights into cultural practices related to forgiveness.

AI can also help you dig deeper into difficult passages. Consider Romans 9, a chapter that has challenged theologians for centuries with its discussions of predestination and God's sovereignty. AI can summarize various interpretive perspectives, point to relevant commentaries, and offer linguistic analyses that shed light on Paul's arguments. This doesn't replace the need for your prayerful wrestling with the text but gives you the tools to engage with it more thoughtfully.



Connections between ideas and concepts in the Bible are sometimes hard to keep track of an organize. Not so with AI. <sup>6</sup>

### Balancing Automation with Personal Engagement

One risk of integrating AI into Bible study is the temptation to rely too heavily on automation. While AI can save time and provide quick answers, balancing this efficiency with personal engagement is essential. Spiritual growth happens when people wrestle with Scripture, ask questions, and

seek God's guidance. AI can assist in this journey but cannot replace the transformative work when people engage deeply with God's Word.

For example, generating a passage summary using AI is helpful. Still, there's no substitute for reading the text, reflecting on its meaning, and allowing the Holy Spirit to speak to your heart. Similarly, while AI can suggest practical applications of a verse, your reflection determines how those applications align with your unique circumstances and calling.

## Practical Tips for Integrating AI

To make the most of AI without losing the personal and spiritual essence of Bible study, consider the following practices:

1. **Start with Prayer:** Begin your study time by inviting the Holy Spirit to guide your understanding. Use AI as a resource to complement, not replace, this divine guidance.
2. **Use AI for Context and Insight:** Let AI provide historical, linguistic, and thematic insights that deepen your understanding of the text. For example, if you're studying Jesus's parables, AI can help you explore His time's agricultural practices, economic systems, and social dynamics, making the stories more relatable.
3. **Supplement, Don't Substitute:** Use AI to enhance, not replace, your traditional study methods. Rely on AI for

research and analysis, but keep your reading, journaling, and prayer central to your study.

4. **Engage in Critical Thinking:** AI can provide answers, but critically evaluating the information it presents is essential. Cross-reference its insights with trusted commentaries, your observations, and the input of fellow believers.
5. **Set Boundaries:** Limit your reliance on AI to specific study aspects, such as background research or word studies. Allow space for personal reflection and spiritual discernment without the interference of technology.
6. **Incorporate AI into Group Study:** Share AI-generated insights with your study group to enrich discussions but keep the focus on relational and spiritual growth. Use AI as a tool to facilitate, not dominate, the conversation.
7. **Be Mindful of Distraction:** While AI offers numerous benefits, it's easy to get lost in the wealth of information it provides. Stay focused on your study goals, and don't let the abundance of data overwhelm your time with Scripture.

## A New Instrument in Your Orchestra

Integrating AI into Bible study is like adding a new instrument to an orchestra. It enhances the harmony, providing additional layers of depth and richness. Yet it's just one part of the ensemble. Prayer, meditation, group discussions, and personal reflection are foundational practices that make Bible study a transformative experience.

By embracing AI as a complement to these practices, you can unlock new dimensions of understanding while staying rooted in the spiritual essence of your study. AI doesn't do the work for you—it equips you with tools to engage more deeply with God's Word, making your study more dynamic, insightful, and impactful. The ultimate goal remains the same: to grow in your relationship with God and to live out the truths of Scripture in every area of your life.

## The Road Ahead

While AI offers powerful tools for enhancing Bible study, it's essential to approach its use thoughtfully. As we'll explore in upcoming chapters, there are considerations to keep in mind when integrating AI into your spiritual practices. These include balancing technological assistance and personal engagement and developing discernment in interpreting AI-generated insights. By understanding both AI's potential and limitations in Bible study, you'll be better equipped to use this tool effectively in your spiritual journey.

## Coming Up Next

As you integrate AI into your Bible study, remember that the ultimate goal is not automation but transformation. AI supports your engagement with God's Word, offering tools to deepen your understanding and application. With AI as your companion, the treasures of Scripture are more accessible than ever, inviting you to grow in faith and wisdom.



# ABOUT THE AUTHOR



Brian Pitts is an anesthesiologist, educator, mentor, and experienced anesthesiologist who blends his passion for faith, teaching, and technology. He profoundly appreciates Scripture and explores how tools like AI can enhance Bible study and spiritual growth. By combining his education and expertise in innovative technologies, Brian helps others uncover richer insights and connect biblical truths while keeping authentic spiritual development at the center. This book reflects his commitment to creating practical, engaging learning experiences integrating technology into the faith journey.



# INDEX

## A

### Accessibility

- in Bible study tools, 105-106
- for diverse learners, 89-90
- technology integration, 53-55

### Accuracy and Verification

- AI interpretation, 76-78
- cross-referencing, 35-39
- theological consistency, 77-79

### AI (Artificial Intelligence)

- capabilities and limitations, 73-76
- ethical considerations, 71-83
- evolution and history, 19-26
- implementation strategies, 84-101
- integration with Bible study, 36-51

- tools and platforms, 103-110 See also Language Models; Specific Tools

## AI Platforms

- Bible Gateway, 39, 108
- ChatGPT, 103-104
- Claude, 104-105
- Gemini, 105-106
- Logos Software, 108
- Perplexity AI, 106
- YouVersion AI, 107-108

## Ancient Languages

- Greek analysis, 39-41
- Hebrew study, 39-41
- translation insights, 40-41 See also Language Analysis

## Application

- contemporary relevance, 49-51
- cultural bridge-building, 95-97
- practical implementation, 84-101

- real-life scenarios, 126-139

## **B**

### Bible Study

- AI enhancement methods, 36-51
- digital integration, 53-55
- frameworks and methods
  - CRAFT Method, 141-143
  - HEAR Method, 42-44
- group applications, 88-93
- organization techniques, 119-121
- traditional methods, 64-70

### Biblical Analysis

- cross-references, 35, 39
- cultural context, 37-38
- historical background, 30, 39
- thematic connections, 41-43

## **C**

### Case Studies

- congregational implementation, 89-93
- individual applications, 127-133
- pastoral use, 128-129
- seminary integration, 91-92

## **D**

### Devotional Practice

- AI integration, 52-70
- digital sacred space, 53-55
- framework development, 57-60
- morning routines, 55-57
- organization methods, 63-65

### Digital Tools

- evaluation criteria, 103-107
- implementation guides, 84-101
- selection guidance, 107-110 See also specific platforms

## **E**

### Ethical Considerations

- AI limitations, 73-76

- data privacy, 80-81
- theological accuracy, 76-77
- usage guidelines, 71-83

## I

### Implementation

- challenges and solutions, 86-93
- getting started guide, 102-125
- practical steps, 84-101
  - troubleshooting, 121-124

## L

### Language Analysis

- ancient languages, 39-41
- translation comparison, 40-41
- word study techniques, 39-42

### Language Models (LLMs)

- capabilities, 27-35
- comparison charts, 113-114
- types and features, 28-30

## **P**

### Prompts

- development techniques, 140-148
- examples and templates, 157-160
- library creation, 145-146
- troubleshooting, 146-147

## **S**

### Sacred Space

- digital setup, 53-55
- organization principles, 63-65
- spiritual focus, 66-67

### Study Methods

- AI integration, 36-51
- frameworks, 42, 50
- organization systems, 119-121

## **T**

### Technical Considerations

- implementation guidance, 86-93

- setup procedures, 53-55
- tool selection, 103-110
- troubleshooting guides, 121-124

## Teaching Applications

- classroom integration, 91-92
- group study methods, 88-90
- pastoral preparation, 128-129
- sermon development, 132-133

## Theological Considerations

- accuracy maintenance, 76-78
- denominational perspectives, 86-87
- doctrinal integrity, 77-79
- spiritual discernment, 79-81

## Time Management

- devotional practices, 64-65
- productivity tools, 106-107
- study organization, 119-121
- weekly planning, 152-154

## Tools and Resources

- AI platforms comparison, 107-110
- evaluation criteria, 103-107
- selection guidelines, 107-110
- setup procedures, 53-55 See also specific platforms

## Troubleshooting

- common issues, 121-124
- implementation challenges, 86-93
- prompt refinement, 146-147
  - technical problems, 134-137

## **U**

### User Experience

- beginners guide, 115-119
- customization options, 127-128
- interface design, 53-55
- learning curves, 102-104



## **V**

### Verification Methods

- accuracy checks, 76-78
- cross-referencing, 35-39
- source validation, 77-79
- theological alignment, 86-87

## **W**

### Word Study

- AI assistance features, 39-42
- language analysis, 39-41
- study techniques, 39-42
- translation tools, 40-41

### Workflow Integration

- daily practices, 64-65
- digital organization, 119-121
- hybrid approaches, 152-154
- systematic methods, 42-44

## **Y**

### YouVersion AI

- features overview, 108
- implementation tips, 111-112
- study applications, 107-108
- tool integration, 103-104

